



Independent Directorate of Local Government (IDLG) M&E Unit

World Bank's 1st Implementation Support Mission
Social Inclusion Grant (SIG) Relief Effort for Afghan
Communities and Households (REACH) Project

28th Feb 2021

Content

- ❑ **Monitoring findings**
- ❑ **Key Challenges and Recommendations**
- ❑ **Next Plan**

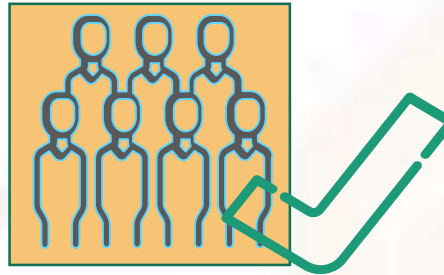
Key Monitoring Finding



Currently 80,618 HHs Identified in 700 CDCs (identification is under process)



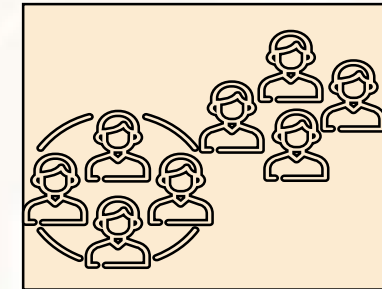
1 Monitoring mission conducted to Herat city



71,555 eligible HHs in 333 CDCs received aid package



92 Monitoring form 1 filled in three cities

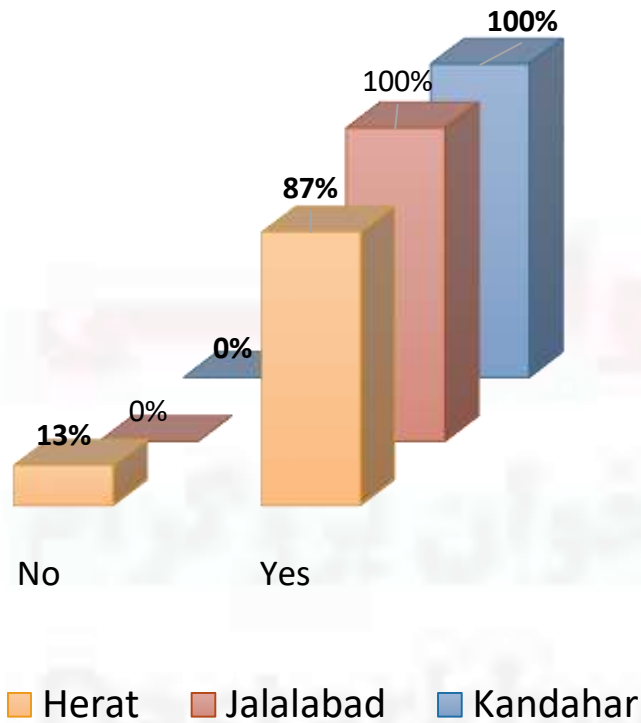


Approximately 2,866 eligible HHs not received aid package in three Cities

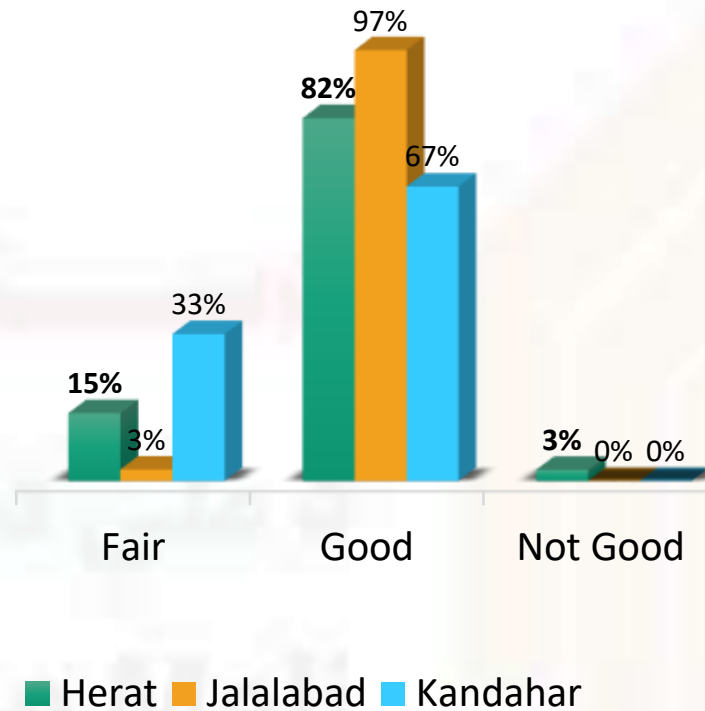


Monitoring Form 1 Findings

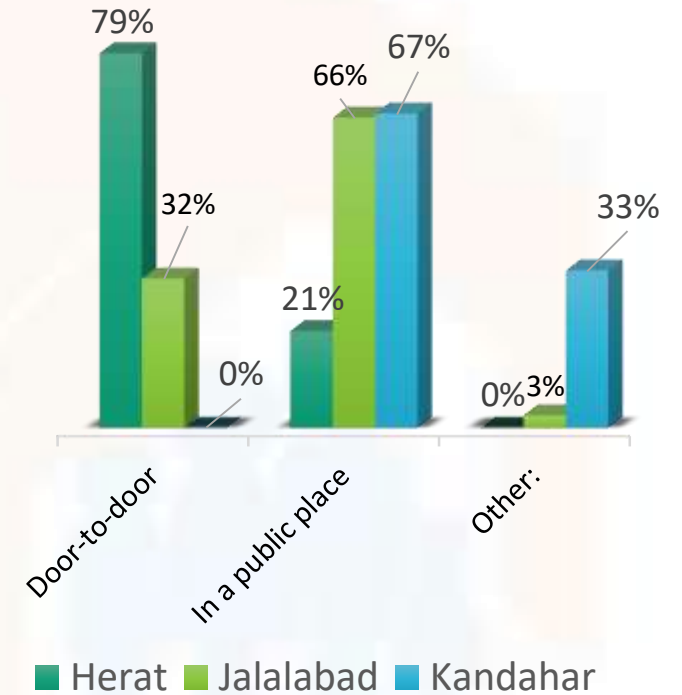
Was the poster posted in a public place showing the key aspects of the Dastarkhan-e-Milli?



How is the quality of the items in relief package being distributed?

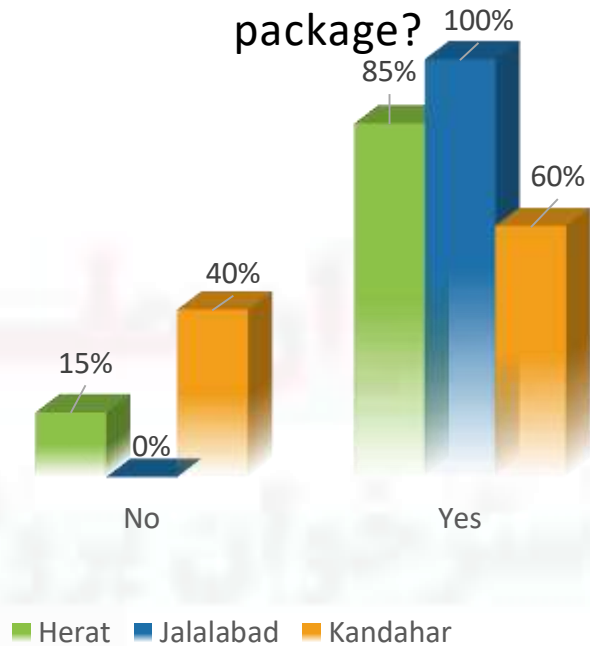


How did the distribution take place?

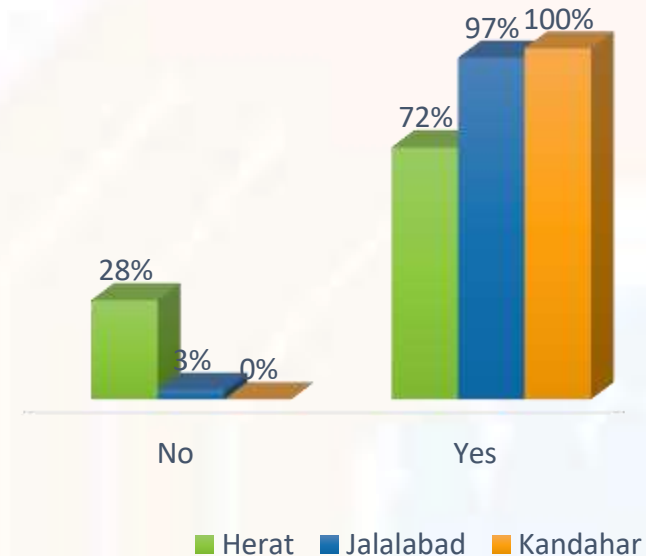


Monitoring Form 1 Findings 2/2

Have all eligible HHs included in the list received the package?



Does the community know where and how to file a grievance?



Key Challenges

Challenges

- Limited budget and increasing the eligible HHs that create problems that caused not receive the aid package
- SIG/REACH Monitoring staffs are not hired so phone monitoring is not conducted yet
- Poor consideration of PPE (reported)
- No visualization of HH beneficiaries list in public area

- CPM members were not trained for CMP form

Recommendations

- This should be reviewed accurately and cover those who not received the package
- SIG/REACH staffs should be on boarded as soon as possible
- Using PPE and public visualization reported and discussed with FP and PMU requested for serious considerations

- Finding shared with FP and PMU to be serious about the

Monitoring Recommendations

- ❑ Based on M&E finding, from SIG aid package distribution, and remained the Eligible HHs M&E team recommend if the both trenches implement in one trench instead the time saved, should be used for beneficiaries verification and revision
- ❑ All the people requested for cash distribution instead food package

Next Coming Plan

- ✓ Train phone monitors as immediately onboarded
- ✓ Conduct remote monitoring (Phone Monitor)
- ✓ Analysis and reporting the first trench distribution
- ✓ Monitor second trench distribution



Next Coming Plan

- ✓ Train phone monitors as immediately onboarded
- ✓ Conduct phone monitoring
- ✓ Analysis and reporting the first trench distribution
- ✓ Monitor second trench distribution



**THANK
YOU**